

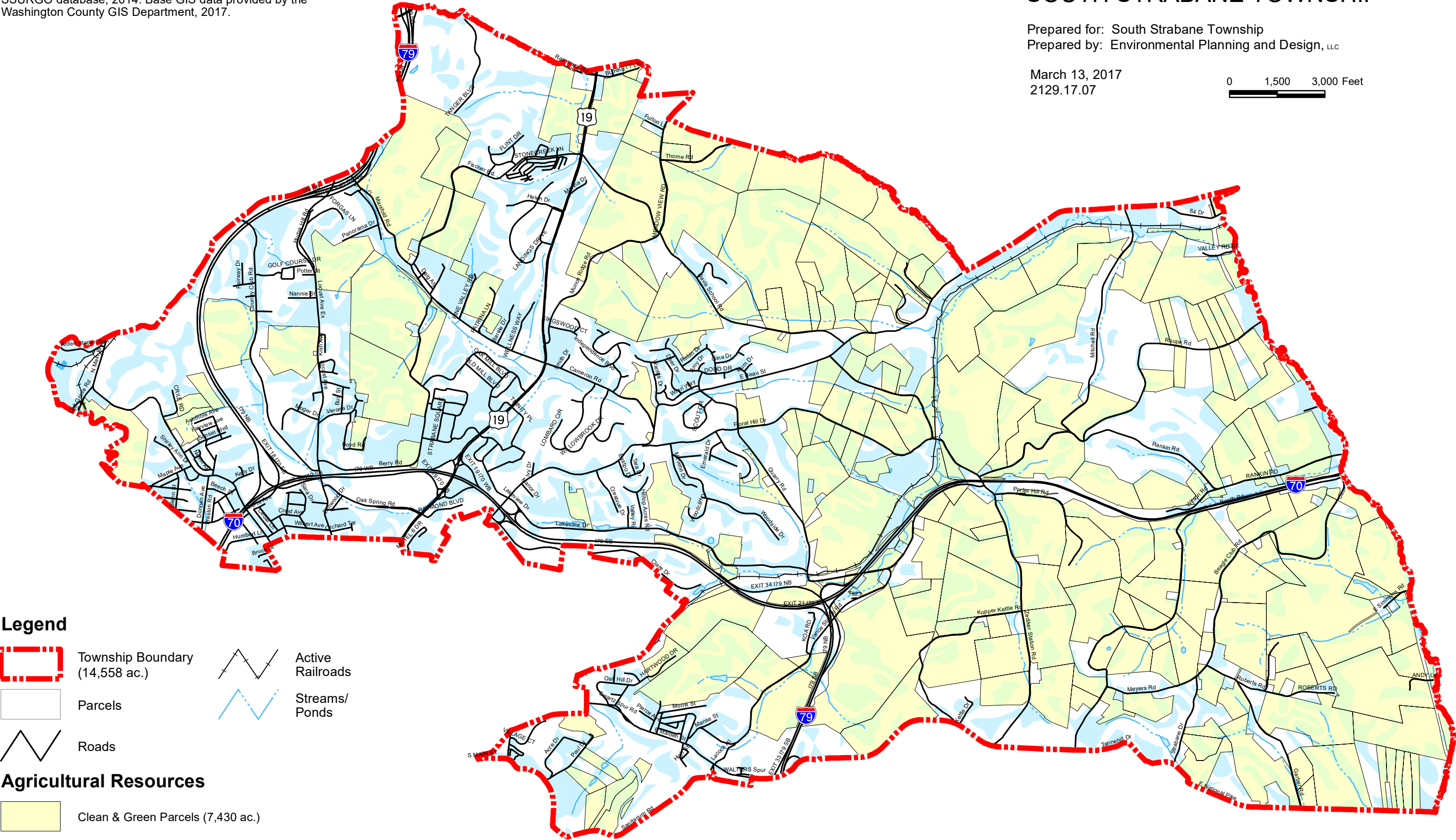
Source: The Clean & Green Parcels are based on Washington County Tax Roll data, 2010. Prime Agricultural Soils were are based on the United States Department of Agricultures, SSURGO database, 2014. Base GIS data provided by the Washington County GIS Department, 2017.

AGRICULTURAL RESOURCES MAP
SOUTH STRABANE TOWNSHIP

Prepared for: South Strabane Township
Prepared by: Environmental Planning and Design, LLC

March 13, 2017
2129.17.07

0 1,500 3,000 Feet



Legend

- Township Boundary (14,558 ac.)
- Parcels
- Roads
- Active Railroads
- Streams/ Ponds

Agricultural Resources

- Clean & Green Parcels (7,430 ac.)
- Prime Agricultural Soils within Clean & Green Parcels (2,450 ac.)
- Other Prime Agricultural Soils (2,790 ac.)

Source: The Slope Analysis Map is based on LiDAR topographic data provided by the Pennsylvania Department of Conservation and Natural Resources' PAMAP Program, 2006. The Slope Analysis was generated using existing 2' contours. Base GIS data provided by the Washington County GIS Department, 2017.

SLOPE ANALYSIS MAP
SOUTH STRABANE TOWNSHIP





Prepared for: South Strabane Township
Prepared by: Environmental Planning and Design, LLC

March 9, 2017
2129.17.03





0 1,500 3,000 Feet

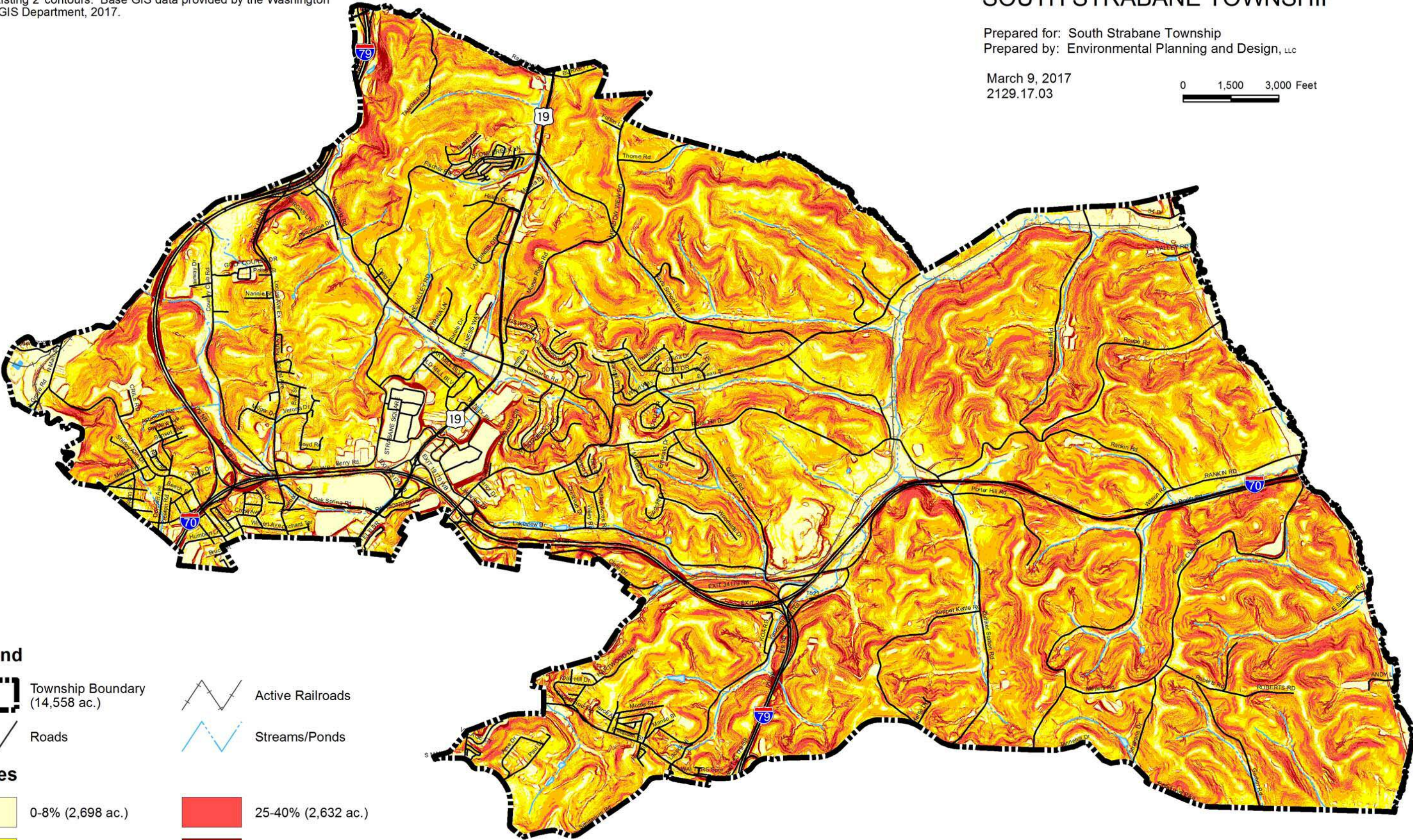


Legend

-  Township Boundary
(14,558 ac.)
-  Roads
-  Active Railroads
-  Streams/Ponds

Slopes

-  0-8% (2,698 ac.)
-  8-15% (3,212 ac.)
-  15-25% (5,163 ac.)
-  25-40% (2,632 ac.)
-  >40% (853 ac.)



Source: The Landform Analysis Map is based on LiDAR topographic data provided by the Pennsylvania Department of Conservation and Natural Resources' PAMAP Program, 2006. The Landform Analysis was generated using existing 2' contours. Watersheds are based on the U.S. Geological Survey's National Watershed Boundary Dataset, 2015. Base GIS data provided by the Washington County GIS Department, 2017.

LANDFORM & WATERSHED MAP
SOUTH STRABANE TOWNSHIP

Prepared for: South Strabane Township
Prepared by: Environmental Planning and Design, LLC

March 9, 2017
2129.17.03

0 1,500 3,000 Feet

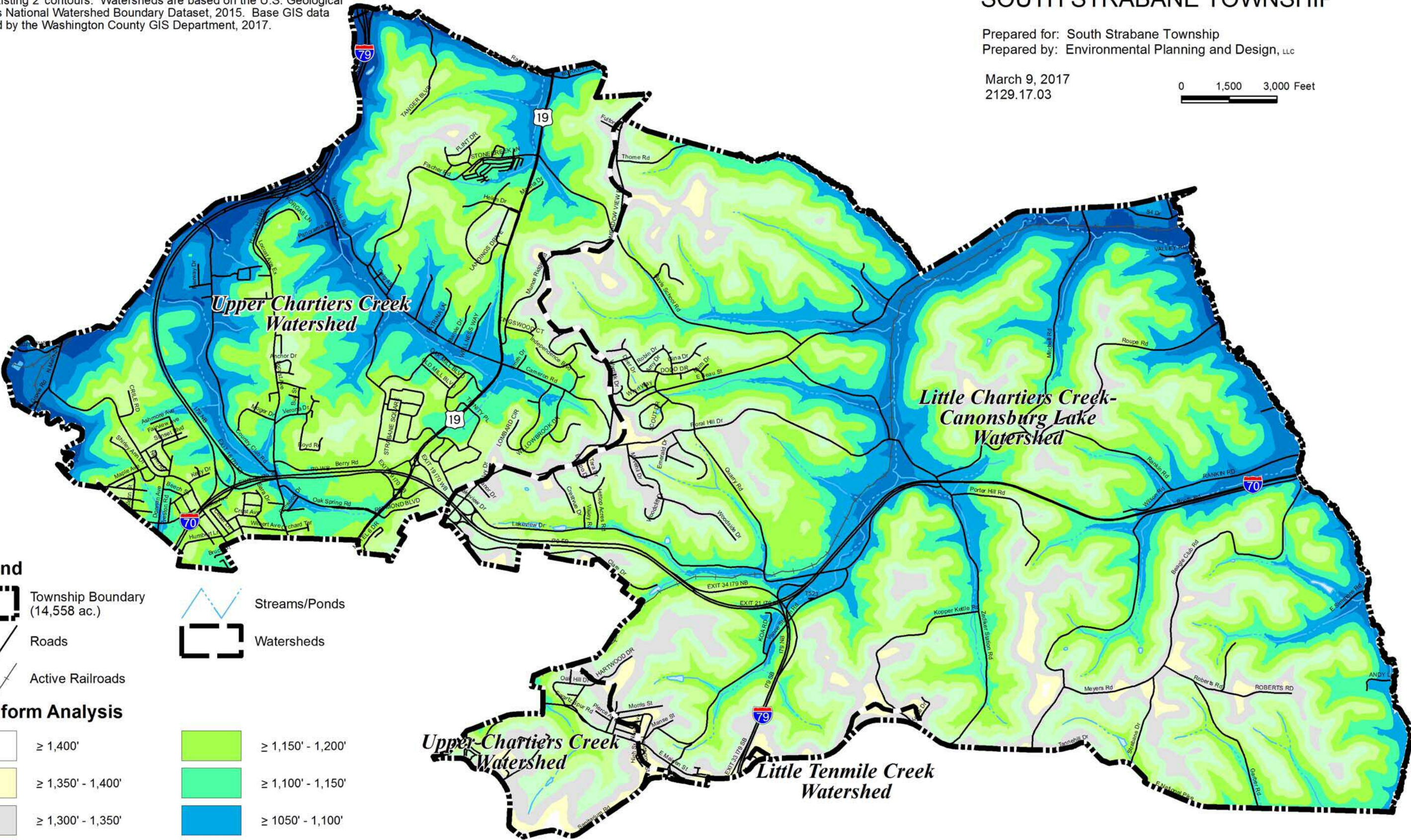


- Legend**
- Township Boundary (14,558 ac.)
 - Roads
 - Active Railroads

- Streams/Ponds
- Watersheds

Landform Analysis

<div></div>	≥ 1,400'	<div></div>	≥ 1,150' - 1,200'
<div></div>	≥ 1,350' - 1,400'	<div></div>	≥ 1,100' - 1,150'
<div></div>	≥ 1,300' - 1,350'	<div></div>	≥ 1050' - 1,100'
<div></div>	≥ 1,250' - 1,300'	<div></div>	≥ 1,000' - 1,050'
<div></div>	≥ 1,200' - 1,250'	<div></div>	< 1,000'

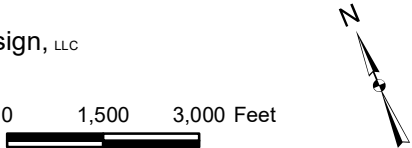


Source: The Transportation Map is based on GIS data provided by the Pennsylvania Department of Transportation, 2017. Annual Average Daily Traffic is based on traffic volume data from the Pennsylvania Department of Transportation, 2012. Base GIS data provided by the Washington County GIS Department, 2017.

TRANSPORTATION MAP
SOUTH STRABANE TOWNSHIP

Prepared for: South Strabane Township
Prepared by: Environmental Planning and Design, LLC

March 23, 2017
2129.17.05



- Legend**
- Township Boundary
 - Parcels
 - Roads
 - Active Railroads
 - Streams/Ponds
 - Bridges

